

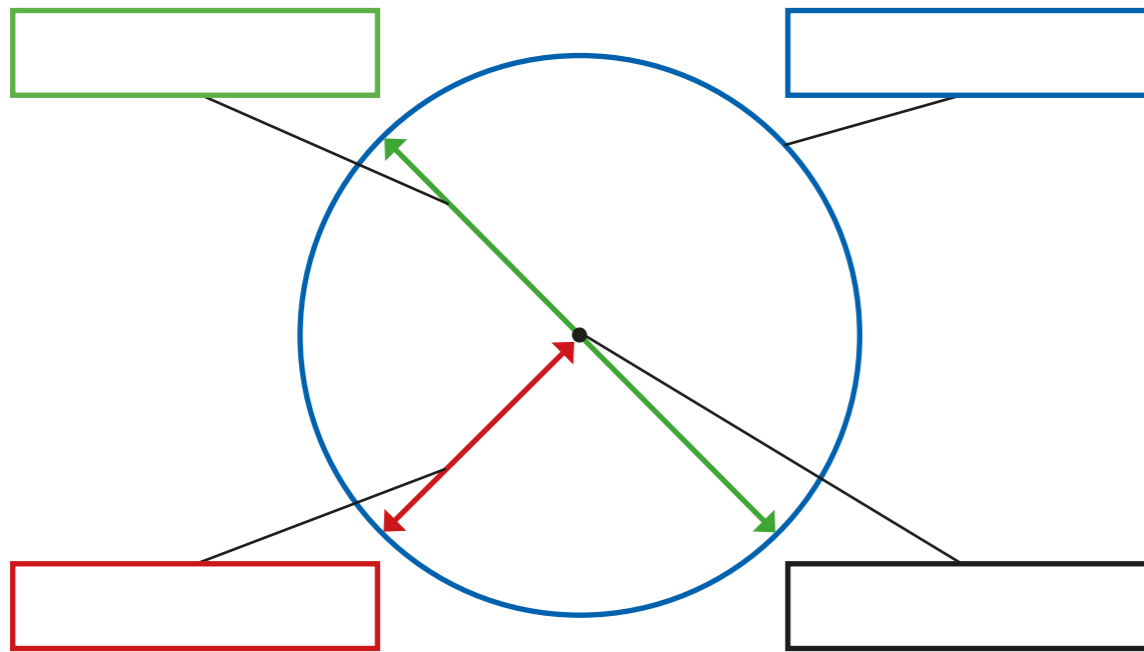
1 Use the words to label the parts of the circle.

radius

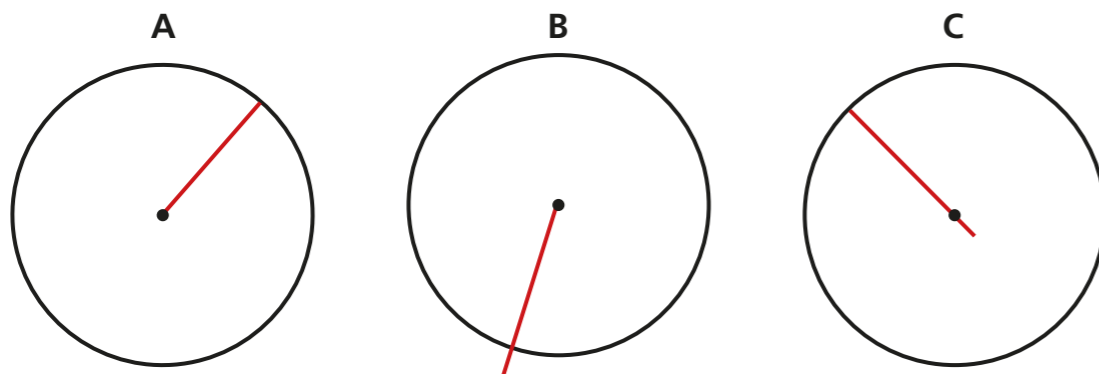
diameter

circumference

centre



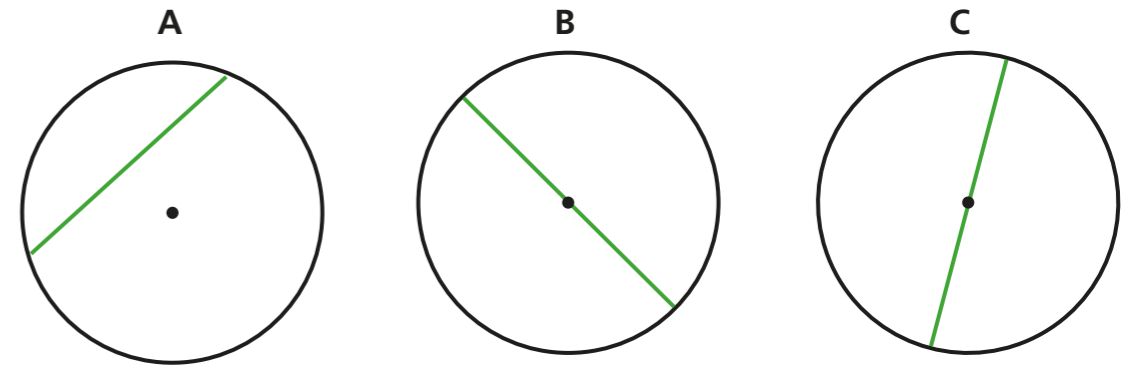
2 The radius has been marked on each circle.



Is the statement true or false? _____

Explain your answer.

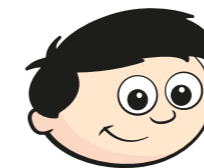
3 The diameter has been marked on each circle.



Is the statement true or false? _____

Explain your answer.

4



I know the radius of a circle is 12 cm, so the diameter must be 6 cm.

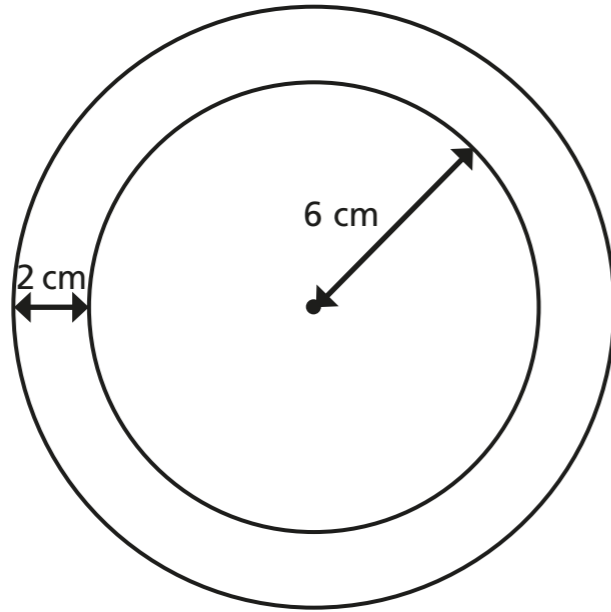
Do you agree with Dexter? _____

Explain your answer.

5 Complete the table.

Radius	Diameter
4 cm	
	12 m
	9 mm
3.5 km	
	12.6 cm

6 The two circles have the same centre.



Complete the sentences.

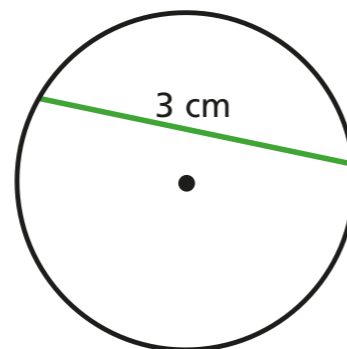
The radius of the inner circle is

The diameter of the inner circle is

The radius of the outer circle is

The diameter of the outer circle is

7 Annie thinks she has accurately measured and labelled the diameter of the circle.



a) Is Annie correct? _____

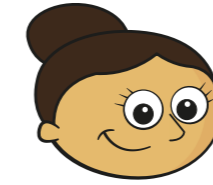
Explain your answer.

b) Is the diameter greater or less than 3 cm?

Explain how you know to a partner.



8



The diameter of a circle is always greater than the radius.

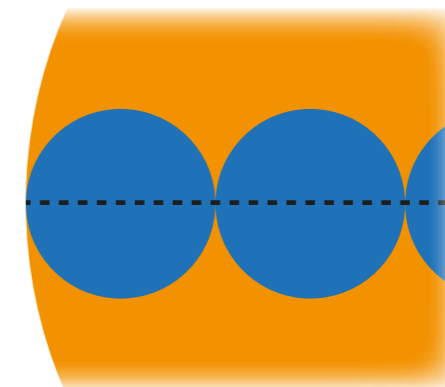
Is Dora correct? _____

Explain your answer.

9 Filip has a large circle with a diameter of 20 cm.

He also has several smaller circles with a radius of 2 cm.

He places the small circles along the diameter of the larger circle as shown.



How many small circles will fit across the larger circle?

small circles

